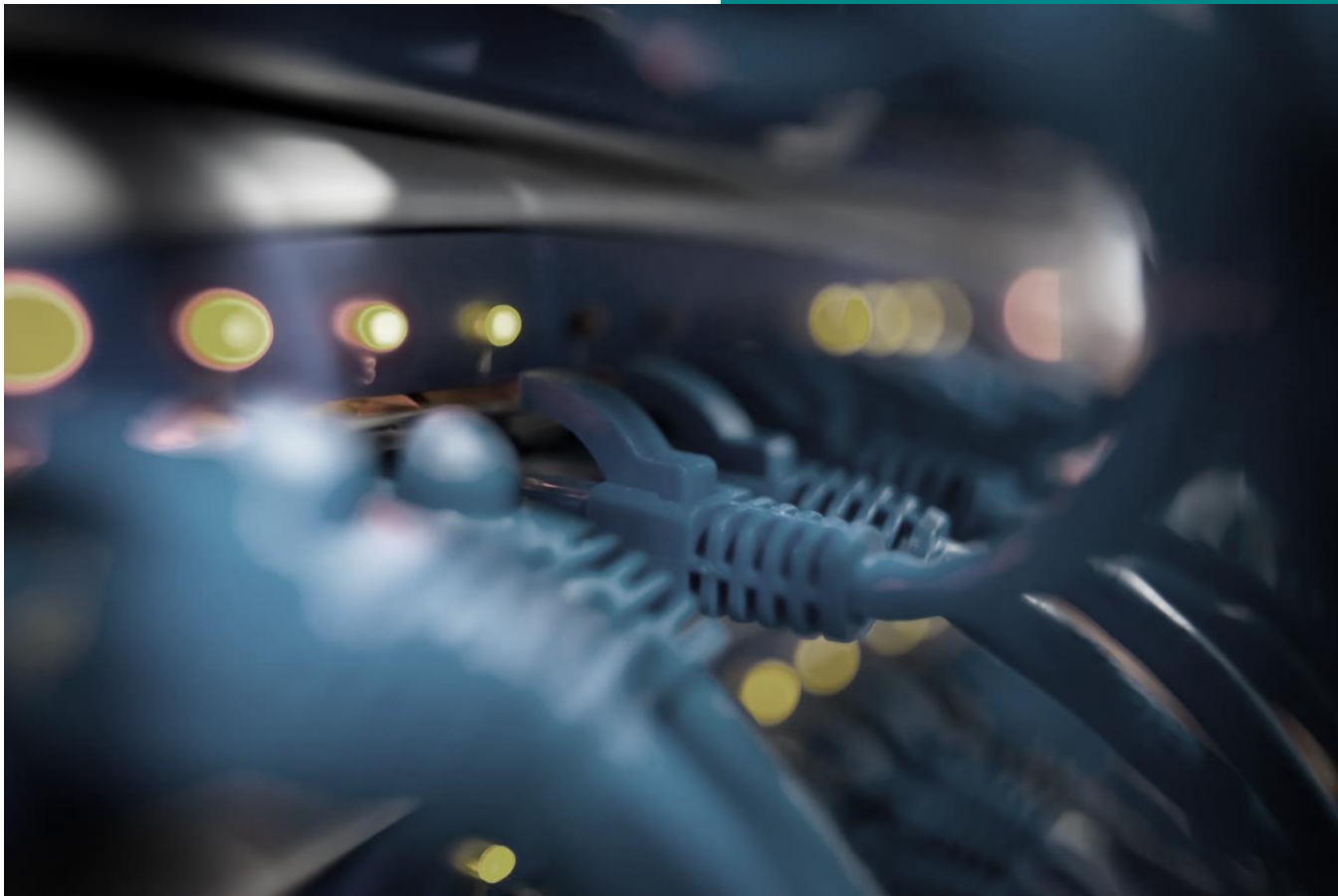


# Moxa Unmanaged Switches Selection Guide



**MOXA**<sup>®</sup>  
w w w . m o x a . c o m

# Entry Level Unmanaged Switches



	EDS-205 A		EDS-208 A			EDS-205	EDS-208		EDS- 2005		EDS-2008	
<b>Gigabit Ethernet ports</b>	-		-			-	-		-		-	
<b>Fast Ethernet ports</b>	5	4	8	7	6	5	8	7	5	8	7	
<b>Fiber ports</b>	0	1	0	1	2	0	0	1	-	0	1	
<b>SFP/ Combo Gigabit modules</b>	-	-	-	-	-	-	-	-	-	-	-	
<b>Dimensions W x H x D (mm)</b>	30 x 115 x 70		50 x 114 x 70			24.9 x 100 x 86.5	40 x 100 x 86.5		19 x 81 x 65 (-ELP Model) 18 x 81 x 65 (-EL Model)		36 x 81 x 65 36 x 81 x 70.9 (-EL-M-ST) 36 x 81 x 68.9 (-EL-M-SC)	
<b>Weight (g)</b>	175		275			135	170		56 (-ELP) / 105(- EL)		90 (-ELP) / 163 (-EL)	
<b>Quality of Service</b>	-					-			Activated via DIP switch			
<b>Broadcast Storm Protection</b>	Activated via DIP switch					Always Active			Activated via DIP switch			
<b>Housing</b>	Metal					Plastic			Plastic (-ELP Model) / Metal (-EL Model)			
<b>Ingress Protection</b>	IP30					IP30			IP40			
<b>Operating Temperature</b>	-10°C to 60°C / -40°C to 75 °C (-T Model)					-10°C to 60°C			-10°C to 60°C / -40°C to 75 °C (-T Model)			
<b>Operating voltage</b>	9.6 to 60 VDC (Redundant dual inputs)					12 to 48 VDC			9.6 to 60 VDC			
<b>Packet Buffer Size</b>	384 Kbits		768 Kbits			512 Kbits		768 Kbits		768 Kbits		
<b>MAC Table Size</b>	1K		2K			1K		2K		2K		
<b>Port break alarm</b>	-		-			-		-		-		
<b>MTBF (Years)</b>	≈340*		≈300*			≈450*		≈40 to 45*		≈540*		≈400*
<b>Warranty</b>	5 years											
<b>Certifications</b>												
<b>CE/FCC</b>	✓		✓			✓		✓		✓		✓
<b>UL 60950-1</b>	-		-			-		-		-		-
<b>UL 508</b>	✓		✓			✓		✓		-		-
<b>UL 61010-2-201</b>	-		-			-		-		✓		✓
<b>EN 60950-1</b>	✓		-			✓		✓		-		-
<b>UL/cUL Class 1 Div. 2</b>	✓		✓			-		-		-		-
<b>ATEX Zone 2</b>	✓		✓			-		-		-		-
<b>DNV/GL</b>	✓		✓			-		-		-		-
<b>ABS/LR/NK</b>	✓		✓			-		-		-		-
<b>NEMA TS2</b>	✓		✓			-		-		-		-
<b>EN 50121-4</b>	✓		✓			-		-		-		-

\*Standard: Telcordia(Bellcore),GB

# Advanced Level Unmanaged Switches



	EDS-305		EDS-308		EDS-309	EDS-316			EDS-2010 ML	EDS-2016 ML		EDS-2018 ML
<b>Gigabit Ethernet ports</b>	-		-		-	-			-	-		-
<b>Fast Ethernet ports</b>	5	4	7	6	6	16	15	14	8	14		16
<b>Fiber ports</b>	0	1	1	2	3	0	1	2	-	2		-
<b>SFP/ Combo Gigabit modules</b>	-		-		-	-			2	-		2
<b>Dimensions W x H x D (mm)</b>	53.6 x 135 x 105					80.1 x 135 x 105			36 x 135 x 95	36 x 135 x 95 58 x 135 x 95 (-ML-MM-SC)		58 x 135 x 95
<b>Weight (g)</b>	790					1140			498	486 / 648 (Fiber Models)		683
<b>Quality of Service</b>	-					-			Activated via DIP switch			
<b>Broadcast Storm Protection</b>	-					-			Activated via DIP switch			
<b>Housing</b>	Metal											
<b>Ingress Protection</b>	IP30											
<b>Operating Temperature</b>	0°C to 60°C / -40°C to 75 °C (-T Model)				-10°C to 60°C / -40°C to 75 °C (-T Model)							
<b>Operating voltage</b>	12 to 48VDC (Redundant dual inputs)				9.6 to 60 VDC (Redundant dual inputs)							
<b>Packet Buffer Size</b>	384 Kbits		768 Kbits		512 Kbits	1.25 Mbits			4 Mbits	2 Mbits		4 Mbits
<b>MAC Table Size</b>	1K		2K		1K	4K			8K			
<b>Port break alarm</b>	✓											
<b>MTBF (Years)</b>	≈48**		≈29**		≈45**	≈29**			≈248*	≈236*		≈203*
<b>Warranty</b>	5 years											
<b>Certifications</b>												
<b>CE/FCC</b>	✓	✓	✓	✓	✓	✓	✓	✓	✓	✓	✓	✓
<b>UL 60950-1</b>	✓	✓	✓	✓	✓	✓	✓	✓	-	-	-	-
<b>UL 508</b>	✓	✓	✓	✓	✓	✓	✓	✓	-	-	-	-
<b>UL 61010-2-201</b>	-	-	-	-	-	-	-	-	✓	✓	✓	✓
<b>EN 60950-1</b>	-	✓	✓	✓	✓	✓	✓	✓	-	-	-	-
<b>UL/cUL Class 1 Div. 2</b>	✓	✓	✓	✓	✓	✓	✓	✓	✓	✓	✓	✓
<b>ATEX Zone 2</b>	✓	✓	✓	✓	✓	✓	✓	✓	✓	✓	✓	✓
<b>DNV/GL</b>	✓	✓	✓	✓	✓	✓	✓	✓	✓	✓	✓	✓
<b>ABS/LR/NK</b>	-	-	-	-	-	-	-	-	✓	✓	✓	✓
<b>NEMA TS2</b>	-	-	-	-	-	-	-	-	✓	✓	✓	✓
<b>EN 50121-4</b>	-	-	-	-	-	-	-	-	✓	✓	✓	✓

\* Standard: Telcordia(Bellcore),GB

\*\*Standard: MIL-HDBK-217F

# Full Gigabit Unmanaged Switches



	EDS-G205	EDS-G308		EDS-G2005	EDS-G2008
Gigabit Ethernet ports	4	8	6	5	8
Fast Ethernet ports	-	-	-	-	-
Fiber ports	-	-	-	-	-
SFP/ Combo Gigabit modules	1	-	2	-	-
Dimensions W x H x D (mm)	29 x 135 x 105	52.85 x 135 x 105		19 x 81 x 65 (-ELP Model) 18 x 81 x 65 (-EL Model)	36 x 81 x 65
Weight (g)	290	880		90 (-ELP) / 120 (-EL)	140 (-ELP) / 180 (-EL)
Quality of Service	-	-	-	Activated via DIP switch	
Broadcast Storm Protection	Always Active	Activated via DIP switch		Activated via DIP switch	
Housing	Metal	Metal		Plastic (-ELP Model) / Metal (-EL Model)	
Ingress Protection	IP30	IP30		IP40	
Operating Temperature	-10°C to 60°C / -40°C to 75 °C (-T Model)				
Operating voltage	9.6 to 60 VDC (Redundant dual inputs)			9.6 to 60 VDC	
Packet Buffer Size	1 Mbits	4 Mbits		1.5 Mbits	
MAC Table Size	8K			4K	
Port break alarm	-	✓		-	
MTBF (Years)	≈322*	≈258*		≈389*	
Warranty	5 years				
Certifications					
CE/FCC	✓	✓		✓	
UL 60950-1	-	-		-	
UL 508	✓	✓		-	
UL 61010-2-201	-	-		✓	
EN 60950-1	✓	-		-	
UL/cUL Class 1 Div. 2	✓	✓		-	
ATEX Zone 2	✓	✓		-	
DNV/GL	-	-		-	
ABS/LR/NK	-	-		-	
NEMA TS2	-	-		-	
EN 50121-4	✓	✓		-	

\* Standard: Telcordia(Bellcore),GB

# PoE Unmanaged Switches



	EDS-G205A-4PoE		EDS-P206A		
PoE Gigabit Ethernet ports	4	4	-	-	-
PoE Fast Ethernet ports	-	-	4	4	4
Gigabit Ethernet ports	1	-	-	-	-
Fast Ethernet ports	-	-	2	-	1
SFP Gigabit modules	-	1	-	-	-
Fiber ports	-	-	-	2	1
Dimensions W x H x D (mm)	29 x 135 x 105		50.3 x 114 x 70		
Weight (g)	300		375		
Quality of Service	-		-		
Broadcast Storm Protection	-		-		
Housing	Metal				
Ingress Protection	IP30				
Operating Temperature	-10°C to 60°C / -40°C to 75 °C (-T Model)				
Operating voltage	12 to 57 VDC (Redundant dual inputs)				
Packet Buffer Size	1 Mbits		768 Kbits		
MAC Table Size	8K		2K		
Port break alarm	-		-		
MTBF (Years)	≈143.6*		≈159.7*		
Warranty	5 years				
Certifications					
CE/FCC	✓		✓		
UL 60950-1	-		-		
UL 508	✓		✓		
UL 61010-2-201	-		-		
EN 60950-1	✓		-		
UL/cUL Class 1 Div. 2	-		-		
ATEX Zone 2	-		-		
DNV/GL	-		-		
ABS/LR/NK	-		-		
NEMA TS2	-		-		
EN 50121-4	✓		-		

\* Standard: Telcordia(Bellcore),GB

# EN50155 Unmanaged Ethernet Switches



	TN5305	TN5308		
Fast Ethernet ports	5 (M12)	8 (M12)	-	4 (M12)
Gigabit Ethernet ports	-	-	-	-
PoE Fast Ethernet ports	-	-	8 (M12)	4 (M12)
Dimensions W x H x D (mm)	60 x 125 x 29.6	60 x 216.6 x 36.1 (-LV Series) 60 x 216.6 x 58.0(-MV Series)	60 x 216.6 x 48.7(-4PoE Series) 60 x 216.6 x 52.9 (-8PoE Series)	
Weight (g)	270	485 to 970 depending on the model		485 to 970 depending on the model
Quality of Service	-	-	-	-
Broadcast Storm Protection	-	-	-	-
Housing	Plastic top cover, metal bottom plate		Metal	
Ingress Protection	IP67		IP40	
Operating Temperature	-25 to 60°C/ -40°C to 75 °C (-T Model)	-25 to 60°C/ -40°C to 75 °C (-T Model)	-25 to 60°C/ -40°C to 75 °C (-T Model)	
Operating voltage	18 to 30 VAC 12 to 45 VDC	12 to 48 VDC (-LV Series) 72 to 110 VDC (-MV Series)	48 VDC	
Packet Buffer Size	-	-	-	-
MAC Table Size	-	-	-	-
Port break alarm	-	-	-	-
MTBF (Years)	≈394*	≈ 320* (-LV Series) ≈292* (-MV Series)	≈236* (-4PoE Series) ≈ 185* (-8PoE Series)	
Warranty	5 Years			
Certifications				
CE/FCC	✓		✓	
UL508	✓		✓	
Railway Application: EN 50155 EN 50121-4	✓		✓	

\* Standard: Telcordia SR332